

**SPECIFICATIONS**

**Body:**

Size:	1.50" & 2.00"
Material:	Carbon Steel Pltd. or 316 SST
Pressure Rating:	1.50"= 1000 PSIG 2.00"= 2000 PSIG

**Float:**

Material:	316 SST or Polypropylene
Pressure Rating:	316 SST (1500 PSIG) Polypropylene
Temperature	
Rating:	316 SST (220°F) Polypropylene
Specific Gravity:	316 SST (.60) Polypropylene(.70)

**Seals:**

Material:	Viton (Std) Buna-N or EPR (Opt)
-----------	------------------------------------

**Switch:**

SPDT:	10 AMP, ½ H.P. @ 125/250 VAC ½ AMP @ 125VDC ¼ AMP @ 250 VDC
DPDT:	10 AMP, ½ H.P. @ 125/250 VAC ½ AMP @ 125HDC ¼ AMP @ 250 VDC

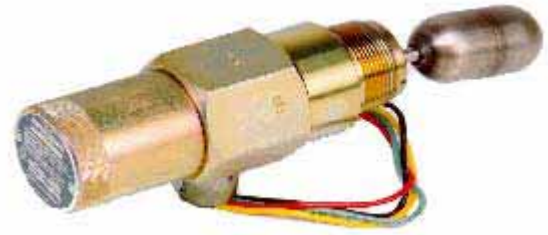
**PARTS LIST**

The 1005E is shipped with the following parts:

1. 1005E LLS Assembly
2. Float (mounted)
3. Extension Arm
4. Instruction Sheet

**INSPECTION OF 1005E**

The 1005E was inspected at the factory, however it should be inspected again before it is finally installed. Operation of the 1005E can be checked by installing the float on the counterbalance arm and lifting the float. The motion should be smooth with no binding of any parts. As the float is moved up and down the electric switch should click on and off.



**INSTALLATION OF 1005E**

The 1005E is installed by threading the body into the process connection. A suitable thread sealant should be used on the pipe threads. The conduit connection must be down and "TOP" up when the unit is completely tightened

**WHEN TO USE THE EXTENSION ARMS**

When installing the 1005E in a NORRISEAL weld collar or external chamber, extension arms are not required. Installing in other fittings may require the use of extension arms (e.g. half coupling, thread-o-let, reducing bushing, full pipe coupling, etc.).

**CAUTION:**  
Use of extension arms will change minimum specific gravity and insertion depth. Please verify before installing. See Chart 1.

**FLOAT and/or EXTENSION ARM INSTALLATION**

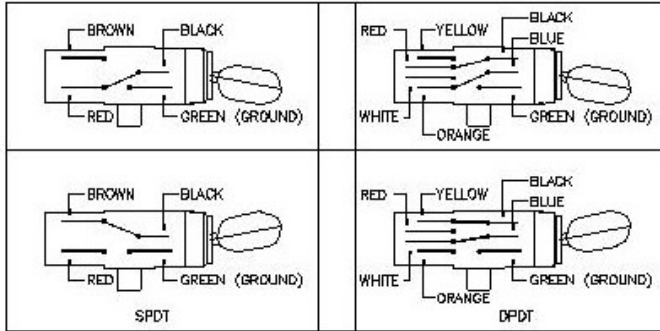
1. Open the tube of loctite and place two drops on the 1/4" external threads (counterbalance/ext. arm).
2. Screw float to counterbalance and gently tighten.  
  
Screw the extension arm to the counterbalance and the float to the extension arm, gently tighten. (DO NOT OVER TIGHTEN AS THIS WILL BEND THE PILOT PIN)
3. Allow the loctite to cure for one (1) hour before submerging the float.

**CHART 1 -SPECIFIC GRAVITY LIMITS (Minimum)**

DIMENSIONS	"E"	"L"	SST FLOAT		POLY FLOAT
			w/STD C.B.	w/HEAVY C.B.	w/STD C.B.
NO EXT	3.25		.60	N/A	.70
.625	3.88		.65	N/A	.85
1.125	4.38		.69	.44	.87
1.500	4.75		.74	.48	.89
2.062	5.32		.79	.57	.92

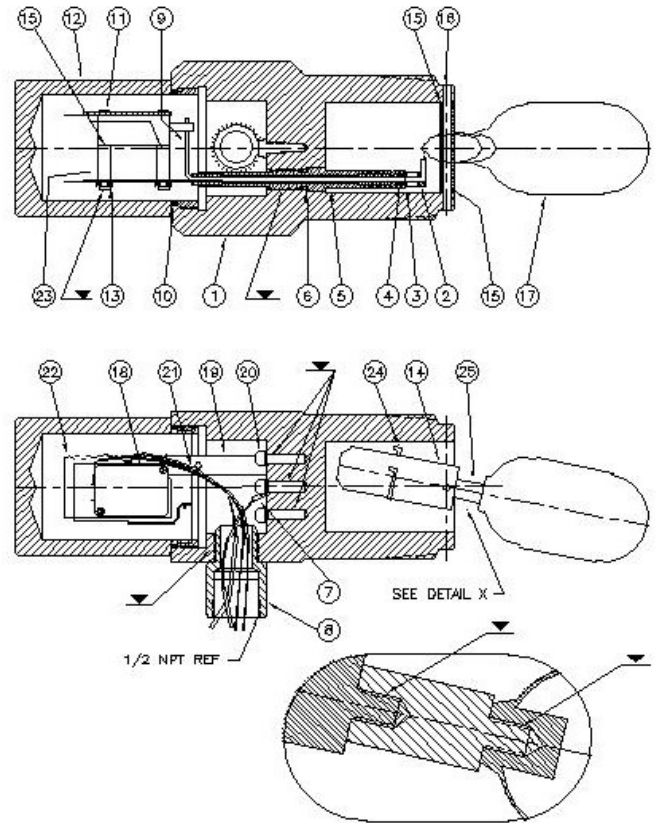
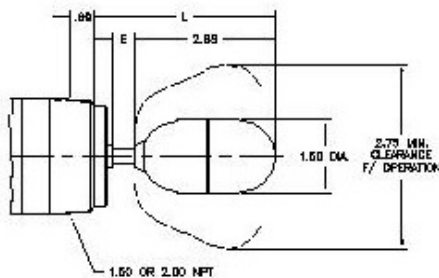
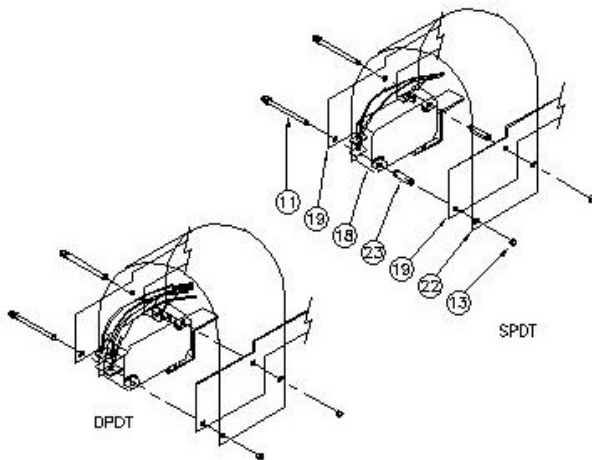
**HOW TO WIRE THE 1005E**

The series 1005E is equipped with either a single pole double throw or a double pole double throw switch. Wiring schematic for both switches are shown below.



**MAINTENANCE**

The series 1005E requires minimal maintenance when operating in clean fluids. If operating in fluids capable of "gumming-up" the moving parts, the unit will have to be removed periodically and internally flushed.



NOTE: APPLY LOCTITE TO THREADED AREAS MARKED \* ▼ \*

ITEM No.	PARTS DESCRIPTION	MATERIAL	COMM. CODE	QTY REQ
1	BODY LLS ELECTRIC	1.50 NPT	A688 CS	490105A14B
		2.00 NPT		490105A130
		1.50 NPT	316 SST	490105A152
		2.00 NPT		490105A146
2	RETAINER BUSHING	316 SST	490105A125	1
3	WASHER FLAT NYLON	NYLON	490105A137	1
4	O-RING VITON	VITON	490105A111	2
5	GUIDE STEM ELECTRIC ARM	316 SST	490105A134	1
6	O-RING VITON	VITON	490101A152	1
7	GROUND WIRE			1
8	ADAPTER CONDUIT	C1018	490105A102	1
9	ARM/STEM BLANK FLOAT ELECTRIC	316 SST	490105A135	1
*10	O-RING VITON	VITON	490101A242	1
11	SCREW MACHINE SST	18-8 SST	490105A13B	2
12	CAP BODY ELECTRIC	C1018	490105A131	1
13	NUT HEX REG SST	18-8 SST	490105A139	2
14	PIVOT COUNTERBALANCE FLOAT WITH BUSHING	316 SST	490105A143	1
15	WASHER FLAT TEFLON	TEFLON	490105A10B	4
16	PIN PIVOT FLOAT	1.50 NPT	316 SST	490105A109
		2.00 NPT		490105A104
17	FLOAT LLS	3000 WP STD	POLYPRO	490102A102
		1500 WP STD	316 SST	490102A101
		950 WP NACE	316 SST	490105A103
18	SPDT SWITCH WITH WIRE		490105A145	1
	DPDT SWITCH WITH WIRE		490105A132	
19	BRACKET SWITCH ELECTRIC	1016	490105A136	2
20	SCREW CAP 500 SST	18-8 SST	490105A141	3
21	TIE WRAP	NYLON		1
22	INSULATOR SWITCH	POLYESTER	490105A142	1
23	SPACER FOR SPDT ONLY	ALUMINUM	490105A140	2
24	RETAINER FLOAT ARM	INCONEL	490105A12B	1
25	ARM EXTENSION	0.63	316 SST	490102A104
		2.08	316 SST	490102A105

\* RECOMMENDED SPECIFIC PARTS  
 † REGISTERED U.S. PATENT OFFICE FOR DUPONT'S FLUORELASTOMERS